



COMPANY PROFILE

www.alliedautopvtltd.com





Allied Automation Pvt Ltd is a wholly owned Zimbabwean company involved in installation, retailing and servicing of electrical equipment in construction, agricultural, mining, municipal and industrial sectors of the economy.

TABLE OF CONTENTS

| ABOUT THE COMPANY

| VISION & MISSION

| OUR VALUES

04 | PLANT EQUIPMENT

| OUR SERVICES

| KEY STRENGTHS

| CULTURE & BENEFITS

| WHY CHOOSE US?

| COMPANY INFORMATION

| THANK YOU NOTE



We strive to offer the finest quality designs that matches client life style and dream, providing quality services.

ABOUT THE COMPANY

Allied Automation Pvt Ltd is a wholly owned Zimbabwean company involved in installation, retailing and servicing of electrical equipment in construction, agricultural, mining, municipal and industrial sectors of the economy.

We started operating in the year 2002 trading as Stocktrol Pvt Ltd and we managed to serve our clients with excellence. We provide technical advice to our clients when they purchase any products from us. We also supply general switch and control gear as well as instrumentation and control equipment. We are also involved in construction projects.



**You can dream,
create....**

design, and build the most wonderful place in the world. But it requires people to make the dream a reality." – **Allied Automation**



**We Set Standards greater than
expected**

Allied Automation offers a culture of empowerment, integrity and account



Allied Automation is involved in developments as project and programme managers. This involves land identification, development and final construction.

OUR VISION

Our vision is to earn commercial values. Our goal is to rapidly deliver mature innovation to every project and to ensure that every project exceed client expectation.

OUR MISSION

We strive to offer the finest quality designs that matches client life style and dream, providing quality services. To this end we are committed to:

Being recognized by our clients for being efficient, responsive and oriented to their needs.

Being recognized by the business community for our diligence and quality of service



OUR VALUES



Ethics & Compliance - We do what we say we will do according to industry standards.



Innovation - We are constantly focused on production , to achieve excellence



Consistency Quality - We endeavor to exceed customer expectations.



Drive - Above all we endeavor to exceed customer expectations.



Safety - We are constantly focused on production, while preserving everyone.

PLANT & EQUIPMENT

Our equipment comprises of:

Scaffolding, concrete pumps, chain blocks, dumpy levels, power tools, compressors, vibrators, hoisting equipment, skid steers, backhoes, trucks, welding machines, generators, water pumps, formwork, safety harness, excavation equipment and various hand tools

OUR SERVICES

Electrical Installations, Construction projects ,Supply of transformers ,LV switchboards, distribution and changeover panels ,Substation maintenance and installation Water pump and sewerage pump stations design and installation, Power cables, Low voltage switchgear supplies, Electric motors supply Light fittings and luminaires supply and installation, Ventilation fans supply, Traffic lights supply and installations ,Solar power installations

Our expertise expands from all construction disciplines;

CIVIL ENGINEERING

Water and sewer reticulation, pavements, storage water drainages and bulk earth work.

CONSTRUCTION MANAGEMENT

Before the first shovel of dirt is turned on, our primary objective is to mitigate and control the risk associated with the common project values which are time, cost, quality and safety. we work with designers to ensure that the details of the design are efficient and cost effective'.The process entails review of Building materials, application, installation technique, field execution and building systems before construction begins. We prevent and solve problems-and it is the smart owner who brings construction management professionals on board to discuss end user needs during the pre-design phase. We hold the promise to close the gap between design and end user satisfaction by o ering project feasibility reviews, constructability analysis and life cycle cost evaluation.

STEEL STRUCTURAL

Farm structures, warehousing, Industrial and commercial structures.

BUILDING PROJECTS


Residential multifamily dwellings, apartments, commercial buildings and general maintenance.

CONSTRUCTION ESTIMATING

At appropriate intervals during the design stage, our team provides detailed, quantitative cost estimates for the purposes of project planning and analysis. We can provide you with everything from executive level pro-forma statements to comprehensive project budgets.

LABOUR BROKING

We make recruitment and deployment of work force convenient in a timely and compliant manner. We offer a wide range of skilled labor manpower ranging from scaffold erectors, steel fixers, carpenters, bricklayers, plumbers, painters, tiller, electricians, cleaners and assistants.



A great building must begin with ...

the immeasurable, must go through measurable means when it is being designed, and in the end must be unmeasured.” – **Allied Automation**

KEY STRENGTHS

Competitive pricing

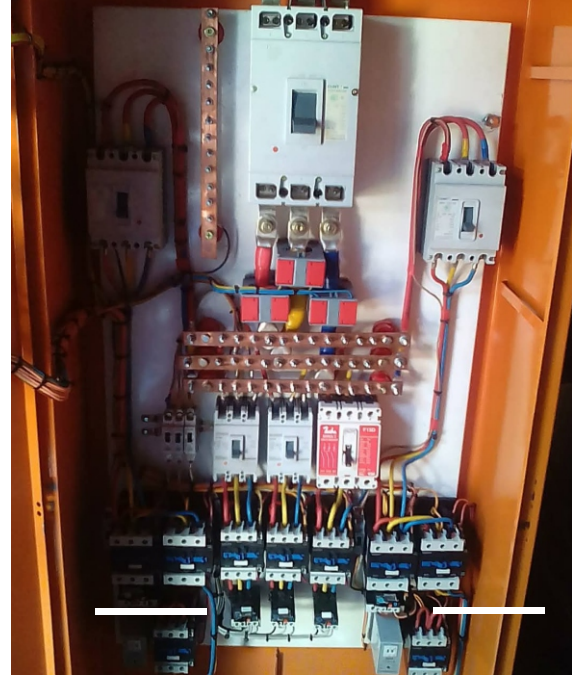
Diverse activities and depth of experience

Proven planning and construction management skills

Reliable highly skilled workforce

Ability to work in operational environments

A culture of quality, safety, delivery and integrity



CULTURE & BENEFITS



Competitive wages and benefits



Diverse Activities and Experience



Support From Management



A culture of quality, Safety, Delivery & Integrity



Opportunities to Train & Up-skill

aa allied
automation
(Pvt)Ltd

HIGH END QUALITY



BRANDS

We supply genuine products manufactured by the following companies:
Siemens, CBI, Schneider Electric, Actom, Eaton, Radiant Lighting, Kraus and Naimer,
Honeywell instruments, Wika Instruments, Kama Industries and Automotor Signals.

Our Staff, Suppliers, Subcontractors and Clients will be encouraged and monitored
to adopt best practice, which will lead them to continually improve their and our performance.



Good buildings come from good people, and
all problems are solved by good design.”

— Allied Automation

MAXIMUM SAFETY



The personal safety and health of each employee of our organization is of primary importance. We believe that our employees are our most important assets and that their safety at the worksite is our greatest responsibility. The prevention of occupationally induced injuries and illnesses is of such consequence that it will be given precedence over operating productivity whenever necessary. Management will provide all mechanical and physical facilities required for the personal safety and health of each of its employees.

Our goals are to reduce employee injury, prevent potential hazards through consistent safety management, and ensure compliance with relevant safety and health standards. Through the attainment of these goals, our company will remain competitive and viable in our industry. Management will procure the necessary resources to execute the objectives of our company's safety and health program. We will hold managers, supervisors and employees accountable for meeting their safety responsibilities.

OUR COMMITMENT TO YOU

We are bound by the sound principles in the way we conduct business. We render excellent service to our valued clients with our committed sales team.

OTHER PRODUCTS

We also manufacture other products locally as per the customer's requirements. Installations are done and commissioning is also done once the work is completed.

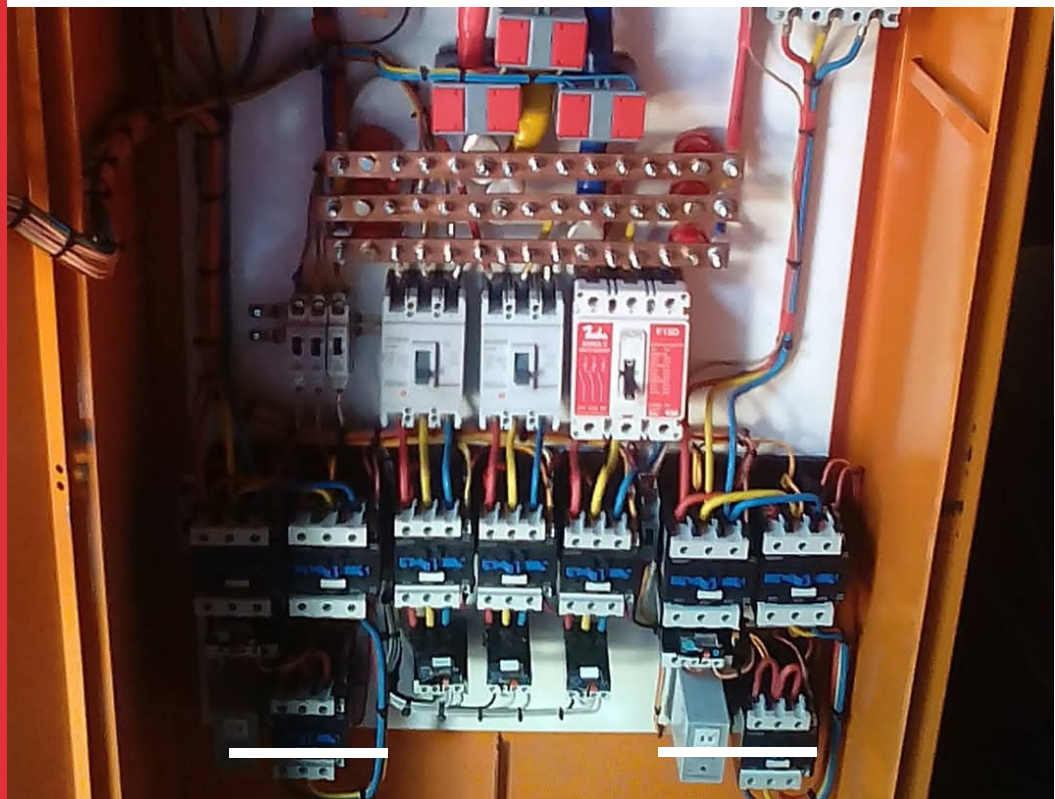
Our efforts for constant technological innovation and development are also given priority status in our ground engineering division. We are not satisfied until we have found the best technical and economic solution for each specific client. Our engineering teams work tirelessly to make this possible. Over the course of the entire project, they work closely together and jointly develop all details, from structural designs to work techniques. All processes are coordinated and optimized. In combination with their wealth of experience, they are capable of solving even the most difficult ground engineering task.

Our ground working division has the following structure, responsible for smooth communication and array of jobs.

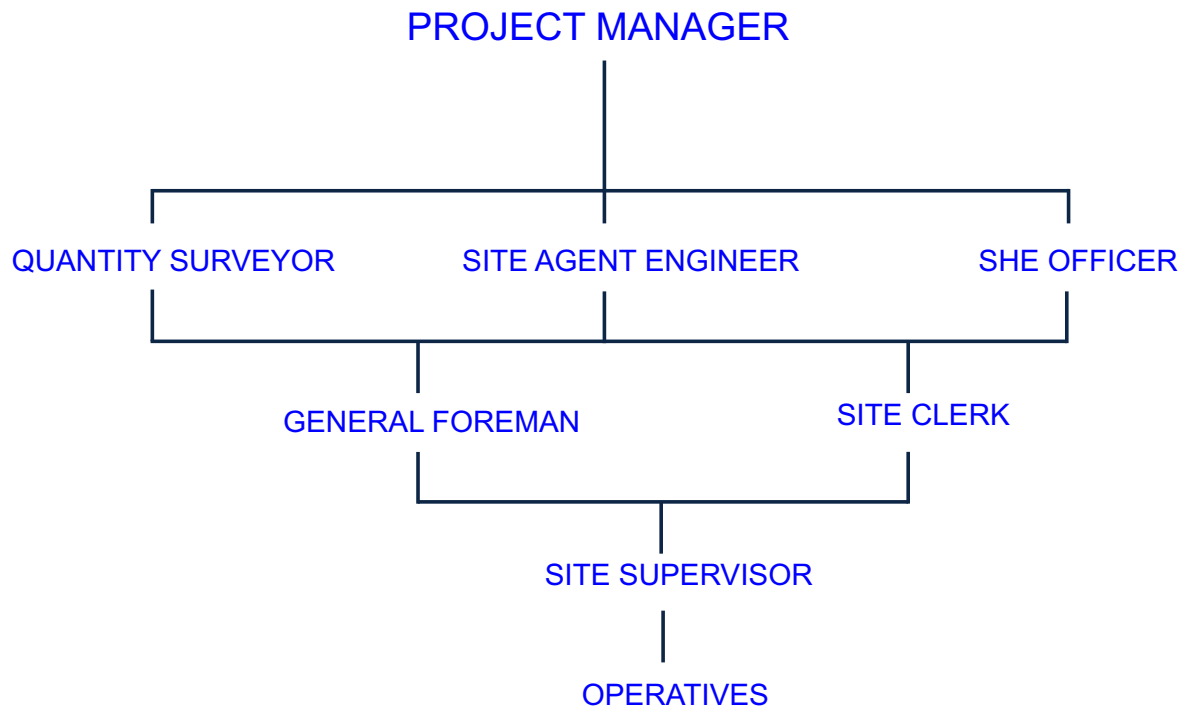
OTHER PRODUCTS

We also manufacture other products locally as per the customer's requirements. Installations are done and commissioning is also done once the work is completed.

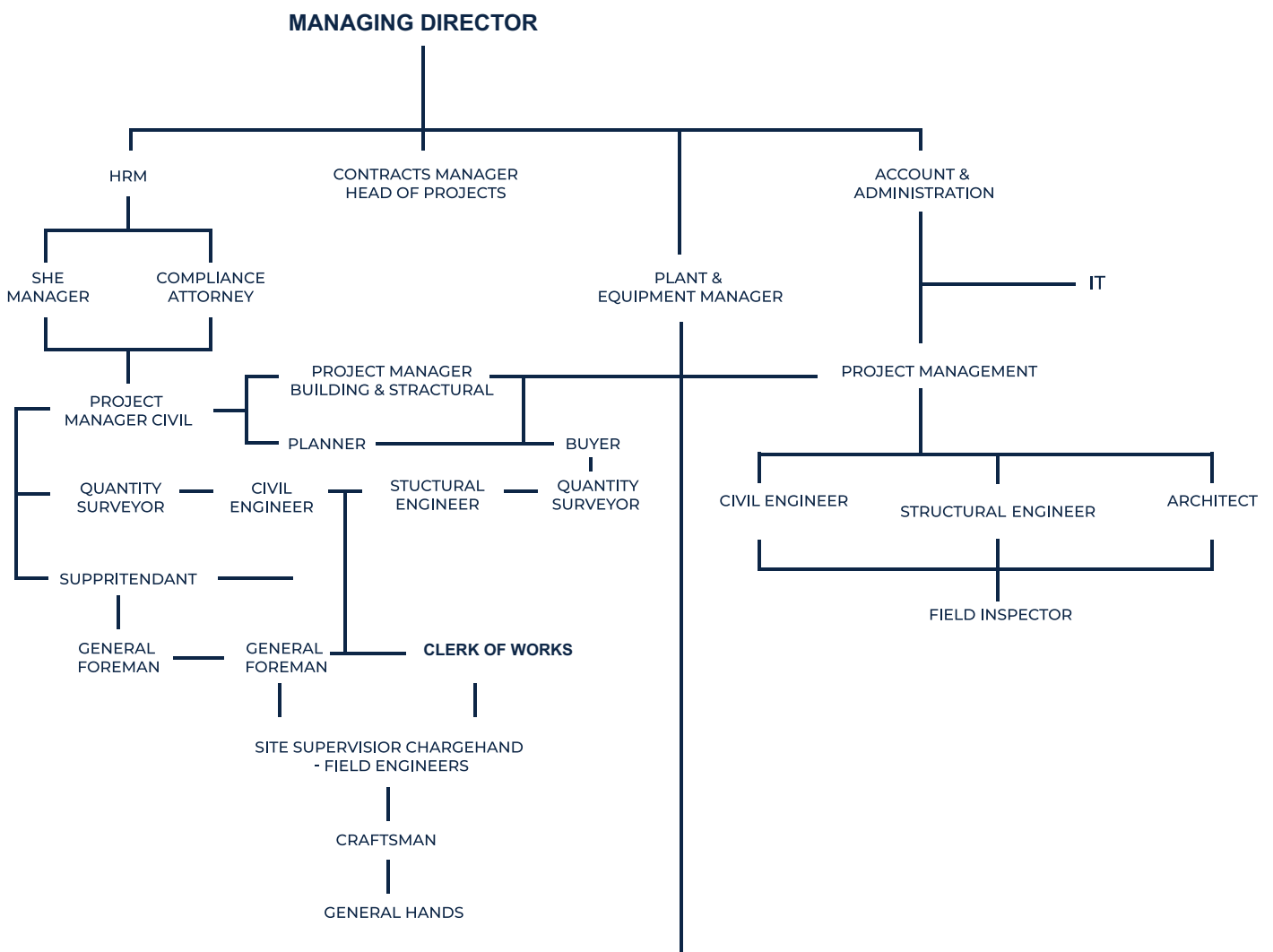
FUNDAMENTAL MASTERPIECE



SITE ORGANOGRAM



ORGANIZATIONAL CHART



OUR PROJECTS



1

AFREXIMBANK AFRICA TRADE CENTER HARARE PROJECT

2

AFREXIMBANK AFRICA TRADE CENTER HARARE PROJECT

3

KAROL MINE ELECTRICITY INSTALLATION PROJECT

4

KAROI TOWN COUNCIL STREET LIGHTS PROJECT

5

VESTA PROPERTIES GLEN DACOMB HOUSING PROJECT

COMPANY INFORMATION

CONTACT US

CONTACT PERSON: L Chitembetembe

Email: alliedautomation01@gmail.com

+263 772 908 304 , +263 715 832 523

**OUR BANKERS ZB BANK FIRST STREET BRANCH
AC NO 4112 738 414 200**

Address: No 10 Cam Road Graniteside, Harare





**THANK YOU FOR YOUR
BUSINESS AND YOUR TRUST.**

www.alliedautopvtltd.com